

PROJECT INFORMATION:

Project Management: by EXEC

Floor Dimensions: 600 m²

Projected Capacity: 35 employees

Location: MOT - São Paulo

Implementation Timing: 90 days, starting November 2011. Key hand over March 1st. 2012

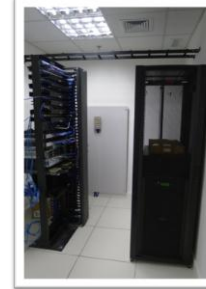
Main Suppliers/Contractors:

- ✓ Architect: Namurud Dubugras
- ✓ Electrical: NB Facilities
- ✓ Cabling: Emphasys
- ✓ Air Conditioning Project: CIVAC
- ✓ Air Conditioning Supplier: BPM
- ✓ Lighting System : Omega
- ✓ Floor Carpeting: Verona
- ✓ Office Furniture: Securit / Herman Miller
- ✓ Partitioning: Dimoplac
- ✓ Blinds: Luxaflex
- ✓ Sprinkler: Hermon
- ✓ Fire Detection&Alarm: Hermon

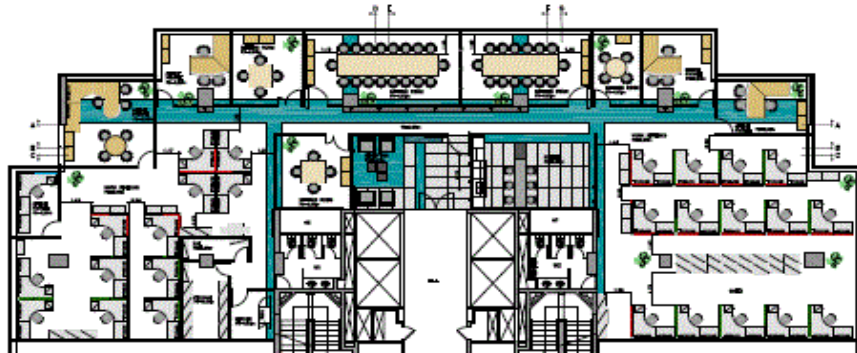
Office Area Requirements :

- ✓ Head Office for 31 workstations
- ✓ Five Meeting Rooms:
 - two: 18 & 16 seats
 - three: 4 seats
- ✓ Reception area
- ✓ IT Room
- ✓ Cyber Coffee area

SNAP SHOTS DURING FITTING IN:



LAYOUT:



SPACE READY:

Meeting Room



Workstations



Cyber Cafee



Manager's Desk

