

PROJECT INFORMATION:

Project Management: by EXEC

Floor Dimensions: 120 m²

Projected Capacity: 12 employees

Location: WTC - São Paulo

Implementation Timing: 60 days, starting January 2012. Key hand over March 1st. 2012

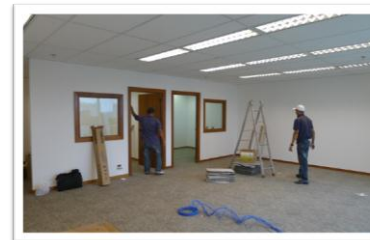
Main Suppliers/Contractors:

- ✓ Architect: Schussel+Quezada
- ✓ Electrical: EPS Instalações
- ✓ Cabling: TRN Telecomunicações
- ✓ Air Conditioning Project: CIVAC
- ✓ Air Conditioning Supplier:
- ✓ Lighting System: Philips
- ✓ Floor Carpeting: Milliken
- ✓ Office Furniture: Pontocom / Flexform
- ✓ Partitioning: Drywall
- ✓ Blinds: Luxaflex
- ✓ Sprinkler: Hermon
- ✓ Fire Detection&Alarm: Hermon

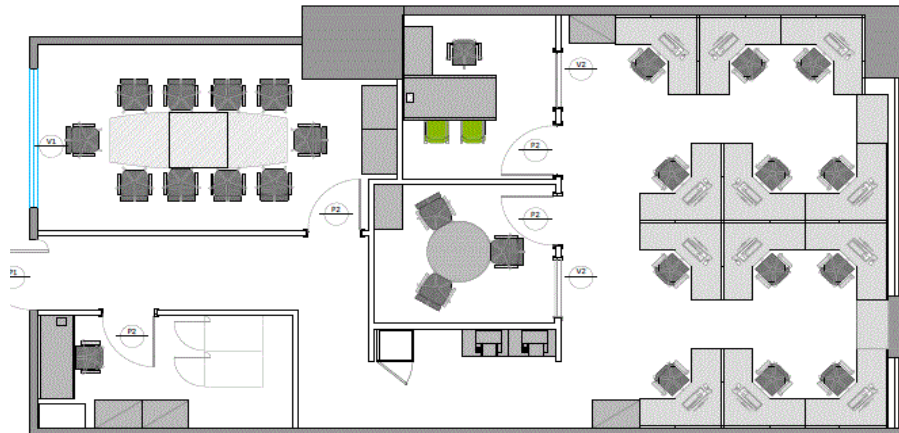
Office Area Requirements :

- ✓ Head Office for 13 workstations
- ✓ Two Meeting Rooms:
 - one: 4 seats
 - one: 10 seats
- ✓ Reception: no
- ✓ IT Room
- ✓ Coffee area

SNAP SHOTS DURING FITTING IN:



LAYOUT:



SPACE READY:

Meeting Room



Workstations



Coffee & printer area



Manager's Desk

